

stainless steel 1.4401, acc. to DIN EN 14420-7 (formerly DIN 2828)

High-quality, robust, universal coupling system with a safety clamp for quick and easy connection of two hoses or for joining one hose to a machine connection.

A male part and a female part are joined together by shifting the handles.  
There is no need to turn the hose!

Kamlok stainless steel couplings are designed for use with corrosive media in the chemical and petrochemical industries, steelmaking, shipbuilding, agriculture, etc.

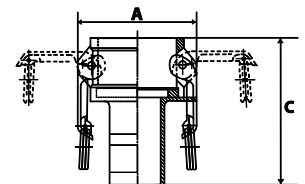
All Kamlok quick coupling boxes and Kamlok closure boxes are supplied with NBR seal.

Pressure range	max. 16 bar
Temperature range	-20 °C to +95 °C
Sealant	NBR, resistant to oils and benzene



### Kamlok female couplers with hose stem, Part C

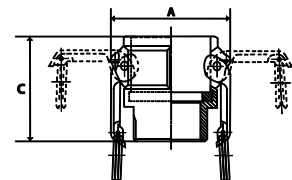
Art. No.	Ident No.	For hose I.D.	For plug Ø mm	A mm	C mm
108099	1112.34-ES	19	32	61.3	91.0
108100	1112.10-ES	25	37	68.2	94.0
108101	1112.114-ES	32	46	79.7	104.0
108102	1112.112-ES	38	54	87.4	110.0
108103	1112.20-ES	50	64	97.0	128.0
108104	1112.212-ES	63	76.5	109.5	131.5
108105	1112.30-ES	75	92	131.8	151.5
108106	1112.40-ES	100	120	159.9	168.0



1112.34-ES

### Kamlok female couplers, male threaded, Part B

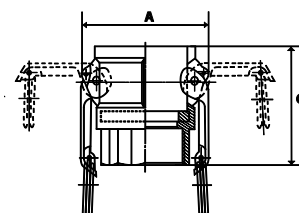
Art. No.	Ident No.	Thread	For plug Ø mm	A mm	C mm
108107	1113.34-ES	R 3/4	32	61.3	45.5
108108	1113.10-ES	R 1	37	68.2	55.5
108109	1113.114-ES	R 1 1/4	46	79.7	63.0
108110	1113.112-ES	R 1 1/2	54	87.4	65.5
108111	1113.20-ES	R 2	63	97.0	75.8
108112	1113.212-ES	R 2 1/2	76.5	109.5	85.5
108113	1113.30-ES	R 3	92	131.8	84.5
108114	1113.40-ES	R 4	120	159.9	88.5



1113.114-ES

**Kamlok female couplers, female threaded, Part D**

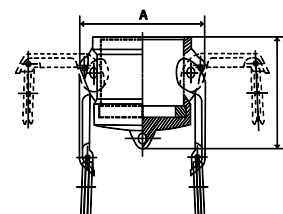
Art. No.	Ident No.	Thread	For plug Ø mm	A mm	C mm
108115	1114.34-ES	G 3/4	32	61.3	45.8
108116	1114.10-ES	G 1	37	68.2	55.0
108117	1114.114-ES	G 1 1/4	46	79.7	63.0
108118	1114.112-ES	G 1 1/2	54	87.4	65.0
108119	1114.20-ES	G 2	64	97.0	71.0
108120	1114.212-ES	G 2 1/2	76.5	109.5	82.5
108121	1114.30-ES	G 3	92	131.8	84.0
108122	1114.40-ES	G 4	120	159.9	90.0



1114.114-ES

**Kamlok dust caps for male adapters, Part DC**

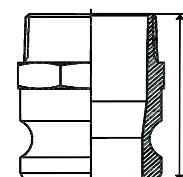
Art. No.	Ident No.	Size	For plug Ø mm	A mm	C mm
108123	1115.34-ES	3/4	32	61.3	40.0
108124	1115.10-ES	1	37	68.2	45.0
108125	1115.114-ES	1 1/4	46	79.7	56.0
108126	1115.112-ES	1 1/2	54	87.4	55.0
108127	1115.20-ES	2	64	97.0	62.0
108128	1115.212-ES	2 1/2	76.5	109.5	63.0
108129	1115.30-ES	3	92	131.8	67.0
108130	1115.40-ES	4	120	159.9	70.5



1115.114-ES

**Kamlok male adapters, male threaded, Part F**

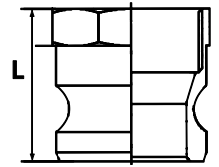
Art. No.	Ident No.	Thread	Plug Ø mm	L mm
108131	1116.34-ES	R 3/4	32	53.5
108132	1116.10-ES	R 1	37	60.0
108133	1116.114-ES	R 1 1/4	46	72.0
108134	1116.112-ES	R 1 1/2	53	73.8
108135	1116.20-ES	R 2	63	81.5
108136	1116.212-ES	R 2 1/2	76	89.5
108137	1116.30-ES	R 3	92	91.0
108138	1116.40-ES	R 4	120	97.0



1116.10-ES

**Kamlok male adapters, female threaded, Part A**

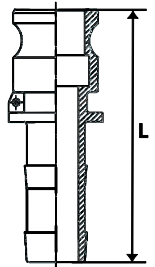
Art. No.	Ident No.	Thread	Plug Ø mm	L mm
108139	1117.34-ES	G 3/4	32	36.0
108140	1117.10-ES	G 1	37	44.7
108141	1117.114-ES	G 1 1/4	46	49.5
108142	1117.112-ES	G 1 1/2	53	50.5
108143	1117.20-ES	G 2	63	61.0
108144	1117.212-ES	G 2 1/2	76	77.5
108145	1117.30-ES	G 3	92	67.0
108146	1117.40-ES	G 4	120	71.5



1117.114-ES

**Kamlok male adapters with hose stem, Part E**

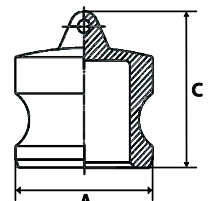
Art. No.	Ident No.	For hose I.D.	Plug Ø mm	L mm
108147	1118.34-ES	19	32	86.7
108148	1118.10-ES	25	37	97.5
108149	1118.114-ES	32	46	112.0
108150	1118.112-ES	38	53	112.0
108151	1118.20-ES	50	63	143.0
108152	1118.212-ES	63	76	138.0
108153	1118.30-ES	75	92	159.5
108154	1118.40-ES	100	120	181.0



1118.10-ES

**Kamlok male dust plugs, Part DP**

Art. No.	Ident No.	Size	Plug Ø mm	A mm	C mm
108155	1119.34-ES	3/4	32	32.1	35.0
108156	1119.10-ES	1	37	36.6	42.0
108157	1119.114-ES	1 1/4	46	45.4	45.0
108158	1119.112-ES	1 1/2	53	53.4	46.0
108159	1119.20-ES	2	63	63.0	54.0
108160	1119.212-ES	2 1/2	76	57.7	56.0
108161	1119.30-ES	3	92	91.4	56.0
108162	1119.40-ES	4	120	119.5	58.0


 1119.10-ES  
page 3 from 4

**Replacement seals for Kamlok couplings, NBR**

Art. No.	Ident No.	For coupling DN
108163	108.201	20 (3/4")
108164	108.202	25 (1")
108165	108.203	32 (1 1/4")
108166	108.204	40 (1 1/2")
108167	108.205	50 (2")
108168	108.206	65 (2 1/2")
108169	108.207	75 (3")
108170	108.208	100 (4")



108.202

**Replacement chains for Kamlok couplings, stainless steel**

Art. No.	Ident No.
108098	108.300



108.300

**Safety clip for Kamlok couplings, galvanized steel, for size 1 1/2, 1 1/4**

Art. No.	Ident No.	For coupling
124737	USC 200	108103, 108109, 108110, 108111, 108117, 108126, 108125